

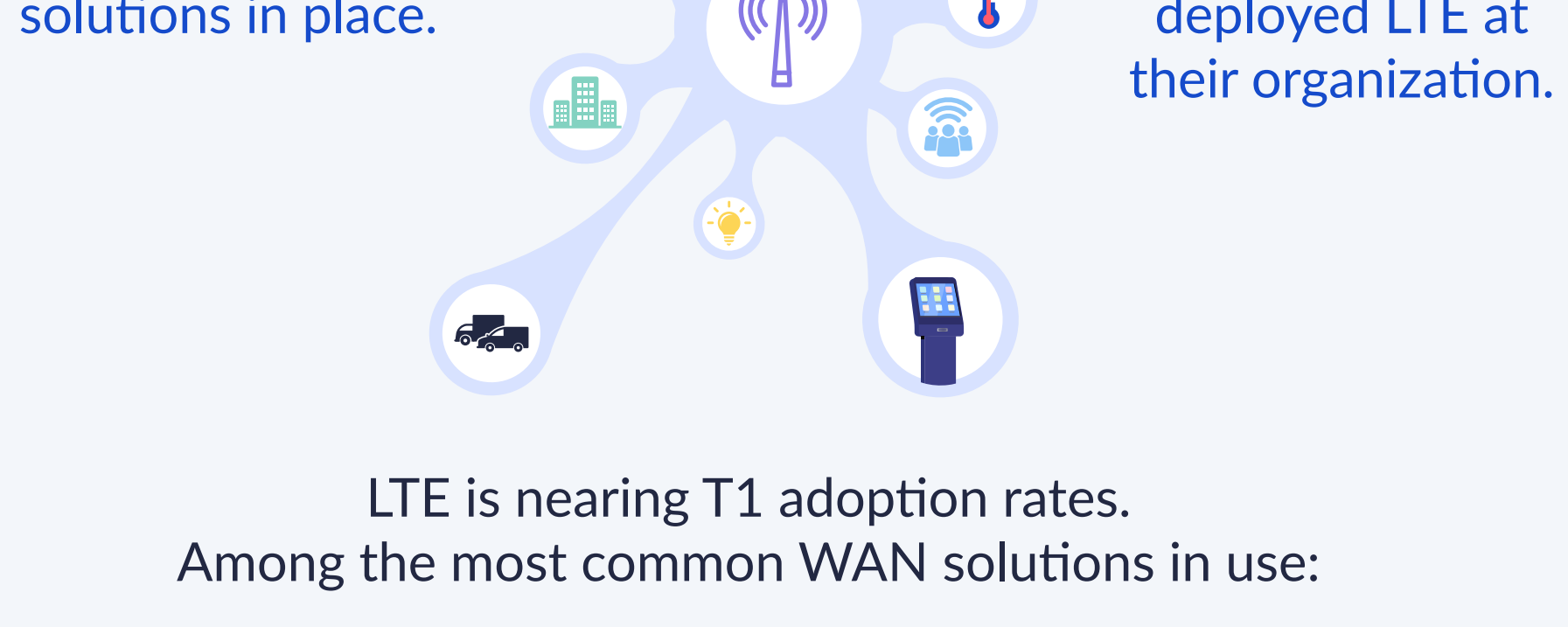
Delivers High-Availability Networks for the Enterprise

Business today moves at lightning speed – and the need for high-availability networks has never been more critical. Today’s networks must scale, adapt, move, and grow as business needs evolve. That’s why many enterprises are turning to LTE – and researching 5G – as an essential WAN solution to meet today’s branch, mobile, and Internet of Things (IoT) requirements.

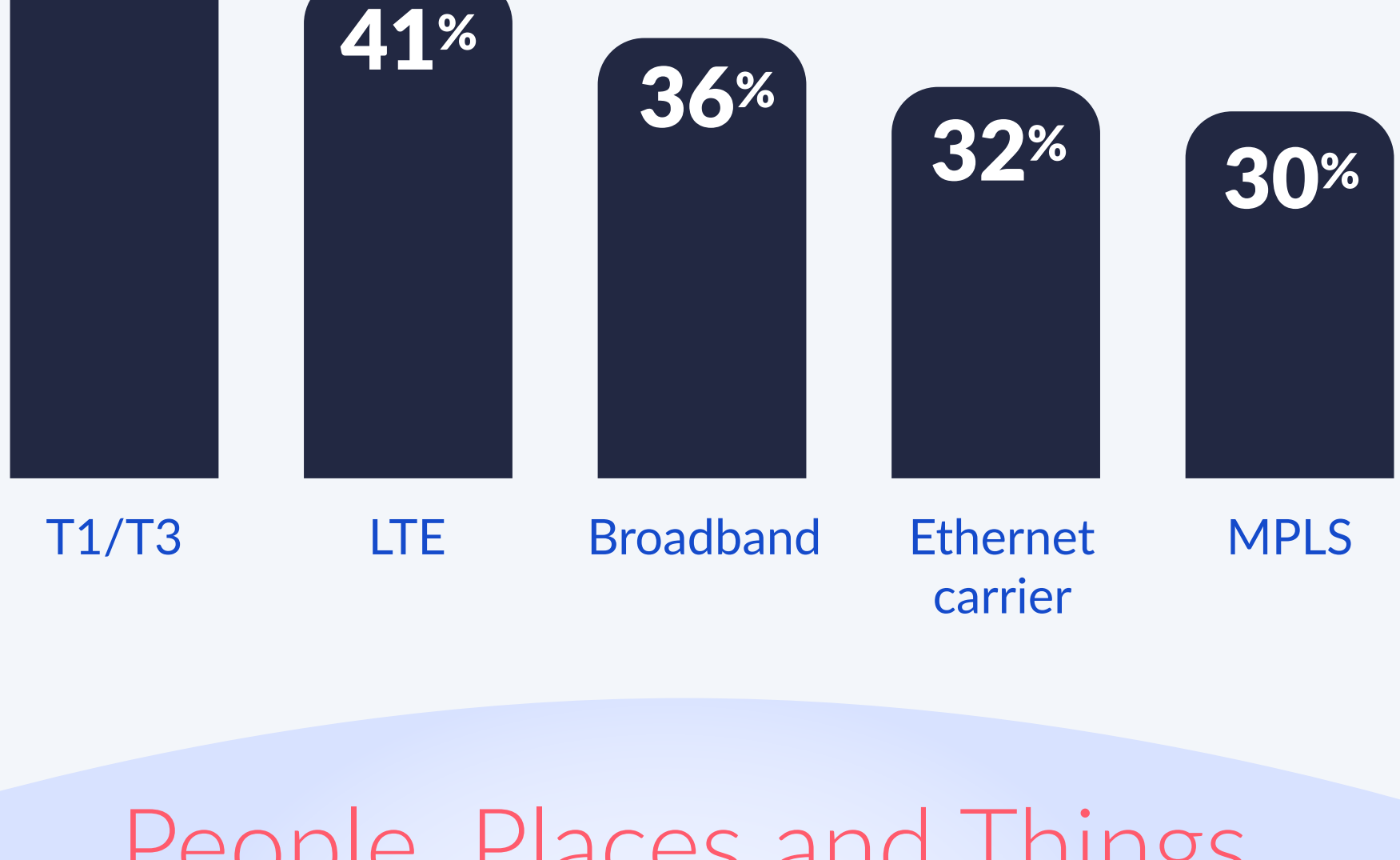
A recent IDG/Cradlepoint survey of IT decision-makers reveals the following:

LTE as a WAN solution is hot

In an effort to move networks beyond branch walls, businesses are turning to LTE.

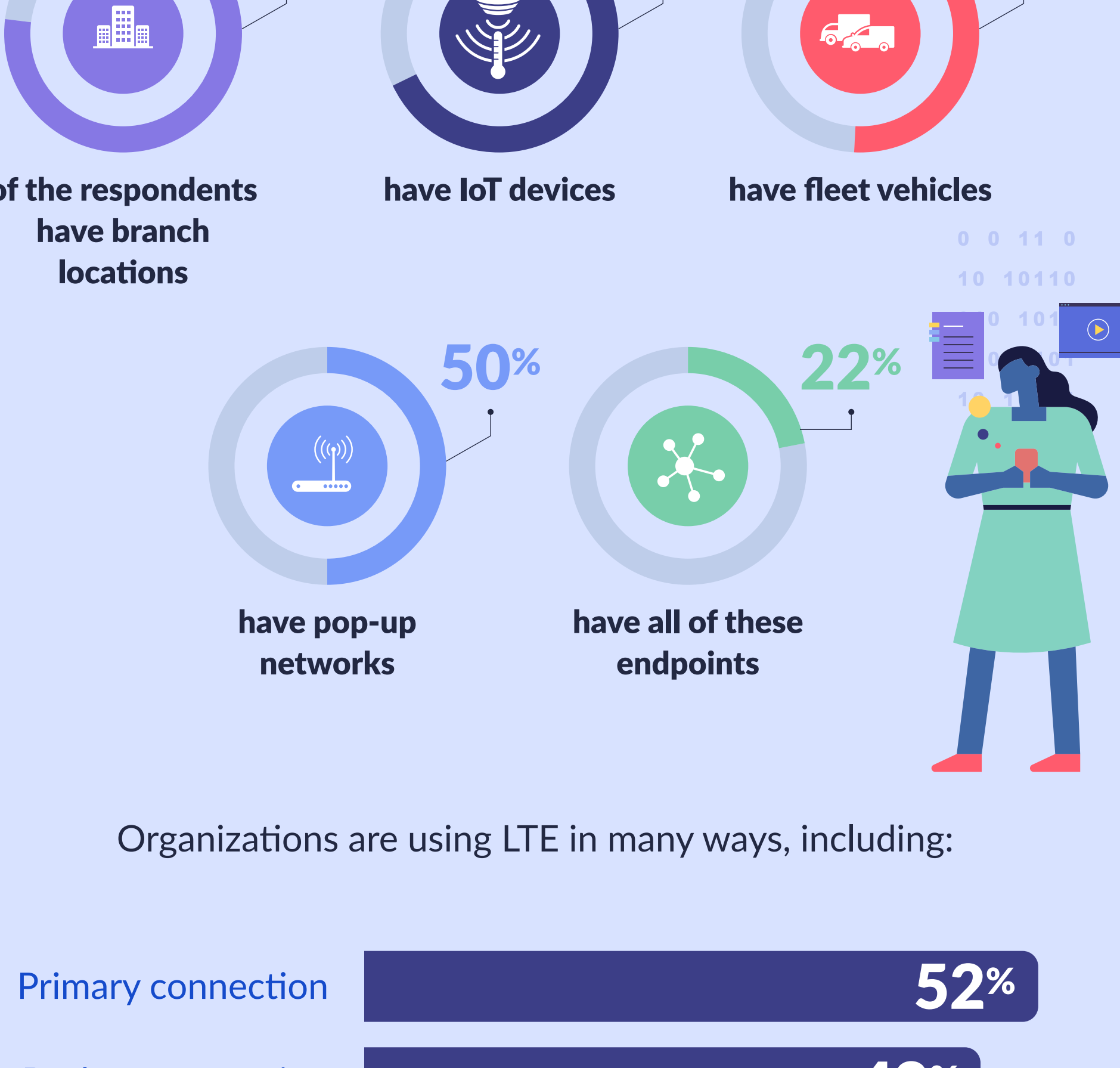


LTE is nearing T1 adoption rates. Among the most common WAN solutions in use:

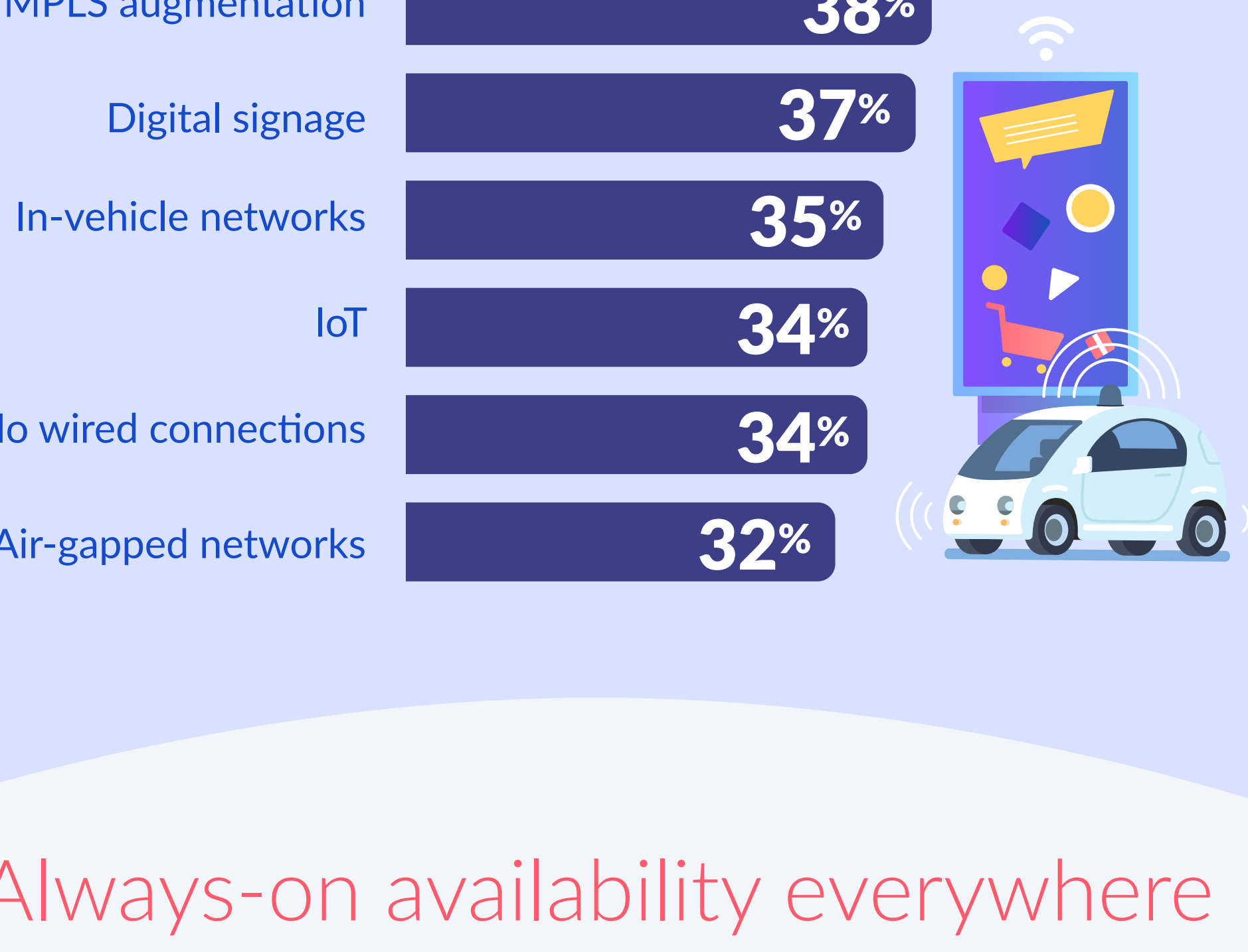


People, Places and Things

Enterprises deploy LTE as a WAN source across a variety of endpoints, as follows:

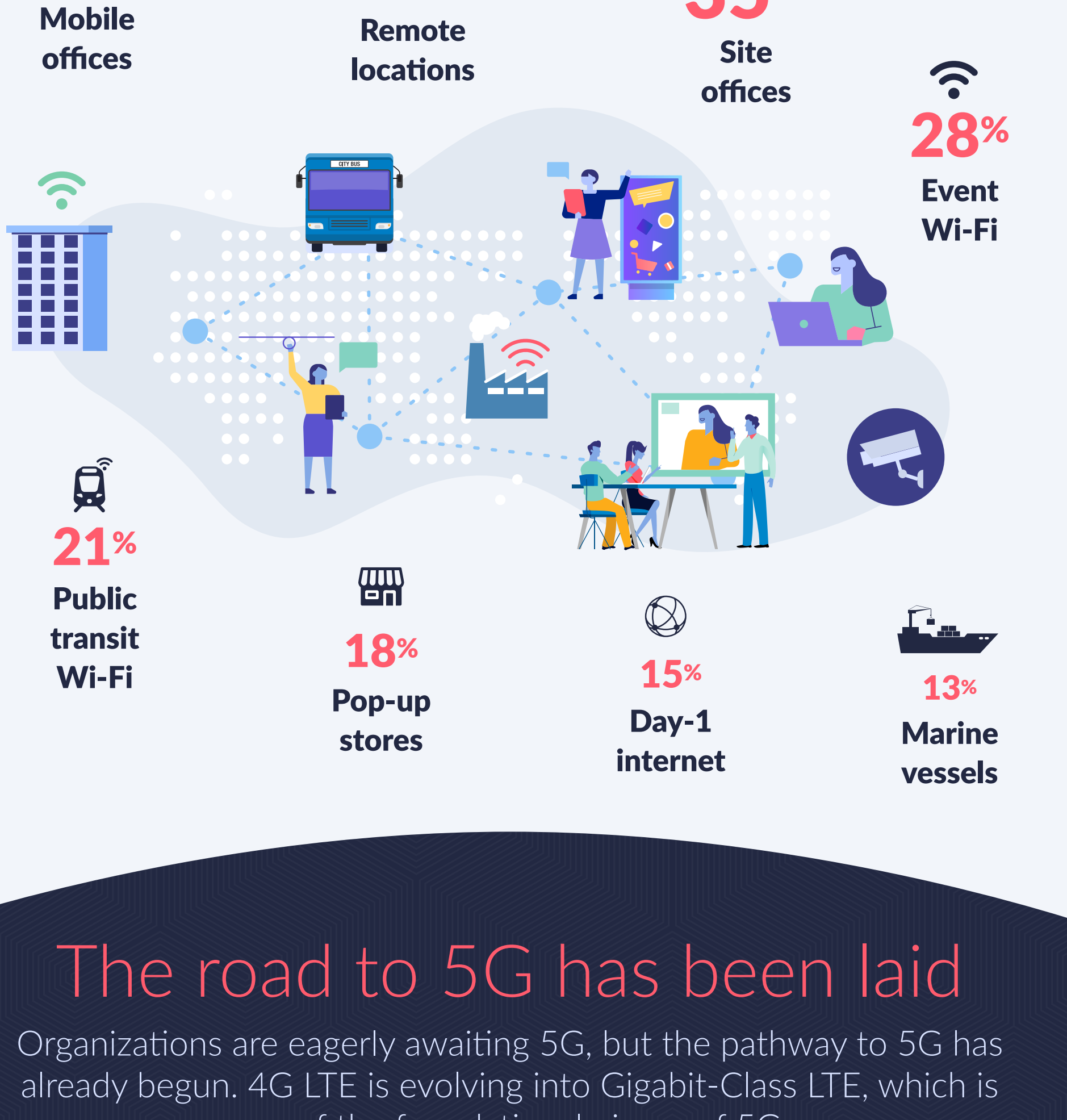


Organizations are using LTE in many ways, including:



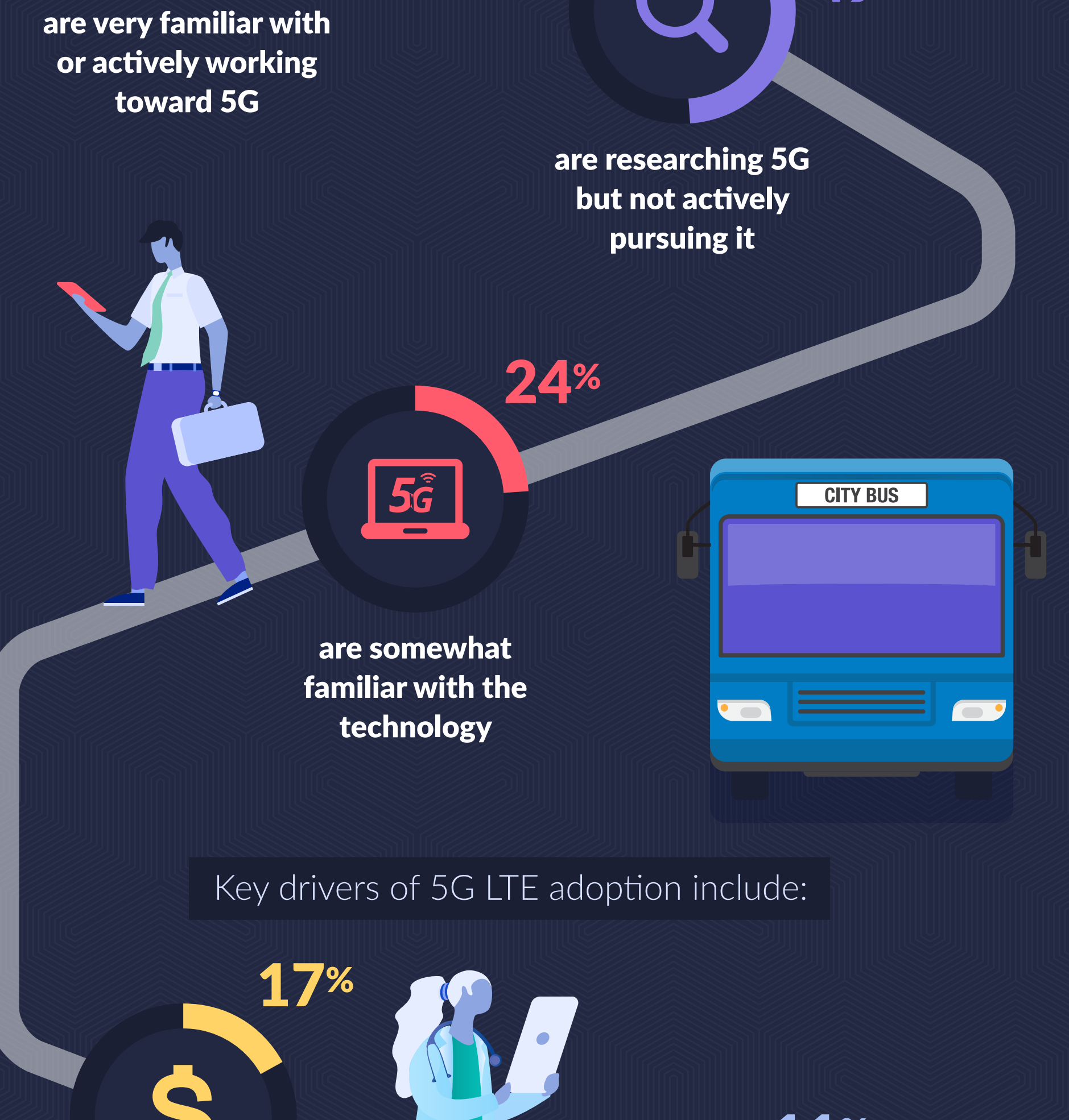
Always-on availability everywhere

Moving beyond bricks and mortar is essential for today’s network. Where are companies using LTE?

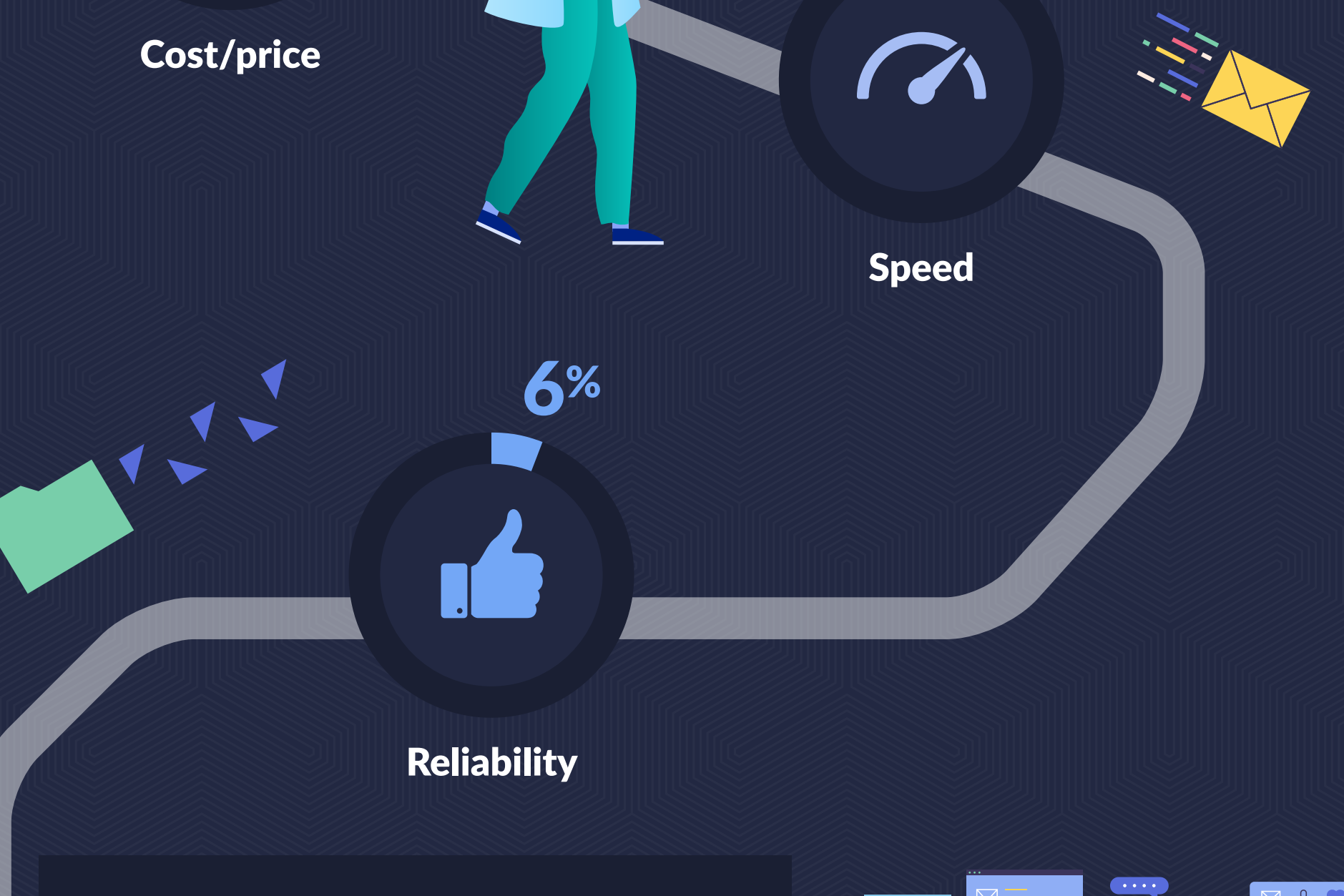


The road to 5G has been laid

Organizations are eagerly awaiting 5G, but the pathway to 5G has already begun. 4G LTE is evolving into Gigabit-Class LTE, which is one of the foundational pieces of 5G.



Key drivers of 5G LTE adoption include:



One recent development on the path to 5G has been Gigabit LTE technology, a foundational component of 5G. Most respondents (69%) said Gigabit LTE is either “likely” or “very likely” to impact their tech road map:

