

Flavors of Failover

Do network outages have you down? Check out these strategies for WAN failover using LTE and 5G in stores, offices, and other sites.

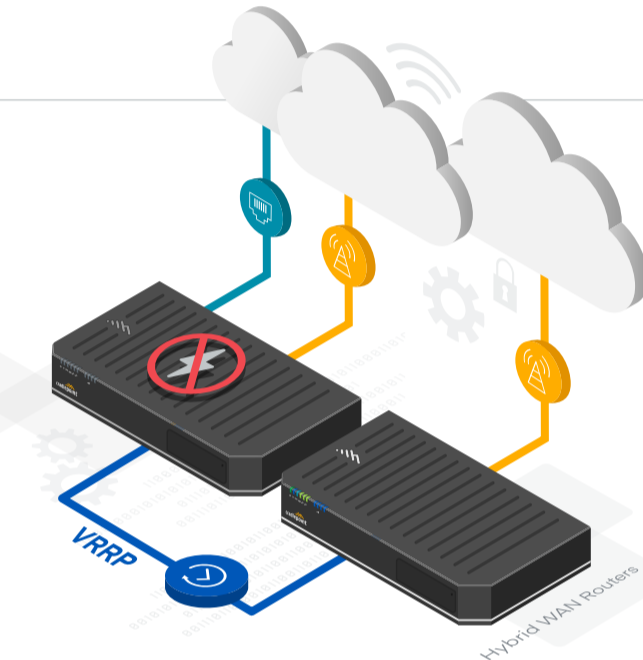
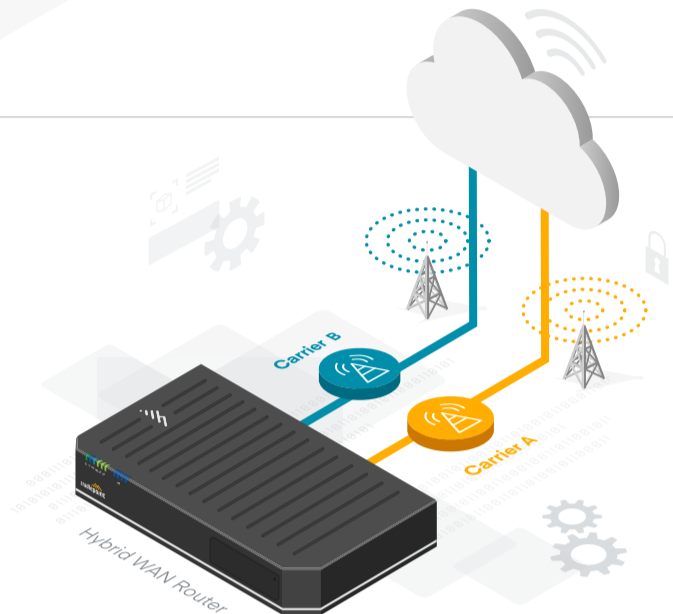


Link Diversity

With a Cradlepoint LTE or 5G adapter backing up a primary router, wired connection outages result in seamless, automatic failover to cellular broadband for your organization's critical data and applications.

Dual-Carrier Failover

A Cradlepoint hybrid WAN router featuring two cellular modems enables increased network availability by supporting automatic failover between two different network operators.

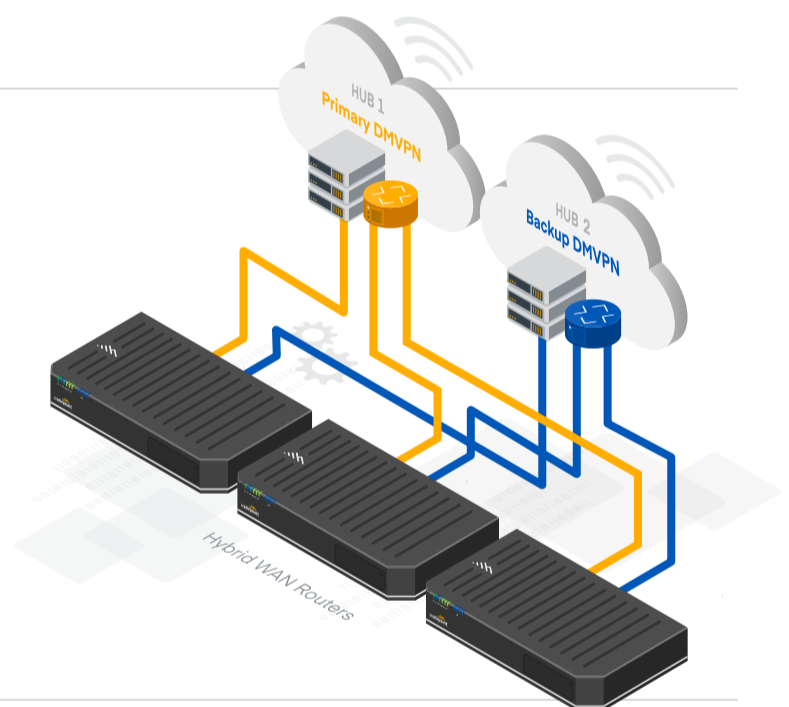


Hardware Redundancy with VRRP

When two Cradlepoint hybrid WAN routers are connected to each other, Virtual Router Redundancy Protocol (VRRP) enables automatic failover of WAN connectivity, routing, and all other networking functionality if the primary router stops working or needs maintenance.

Headend Redundancy with DMVPN Tunnels

With Cradlepoint hybrid WAN routers deployed at fixed and temporary locations, organizations can easily set up multiple DMVPN tunnels from each router to different data centers. This enables automatic failover from one headend device to another — ensuring VPN connections are never lost.



Protection Against Network Spikes

When current traffic is overwhelming available bandwidth, the backup WAN link can be used to augment or offload the primary connection. Cradlepoint's hybrid WAN routers with SD-WAN intelligence route different types of traffic over different links based on preset policies related to network congestion, signal strength, latency, and more.

Out-of-Band Management

With a Cradlepoint LTE or 5G adapter backing up a primary router that is not functioning properly, the IT team maintains remote visibility into and control of the primary router as well as the technologies connected on the LAN.



Learn more at cradlepoint.com/explore-failover